

# For Sale

976 Batesville Road | Greer | SC



\$295,000

GREENVILLE COUNTY | SOUTH CAROLINA

## 0.91 Acres for Sale near Highway 14 & Pelham Road

- 0.91 acres
- All Utilities
- PD Zoning
- Detention Off-Site
- Will Consider Build-To-Suit

### Contact:

Frank Hammond, CCIM CPM  
Shareholder  
+1 864 527 5451  
frank.hamond@colliers.com

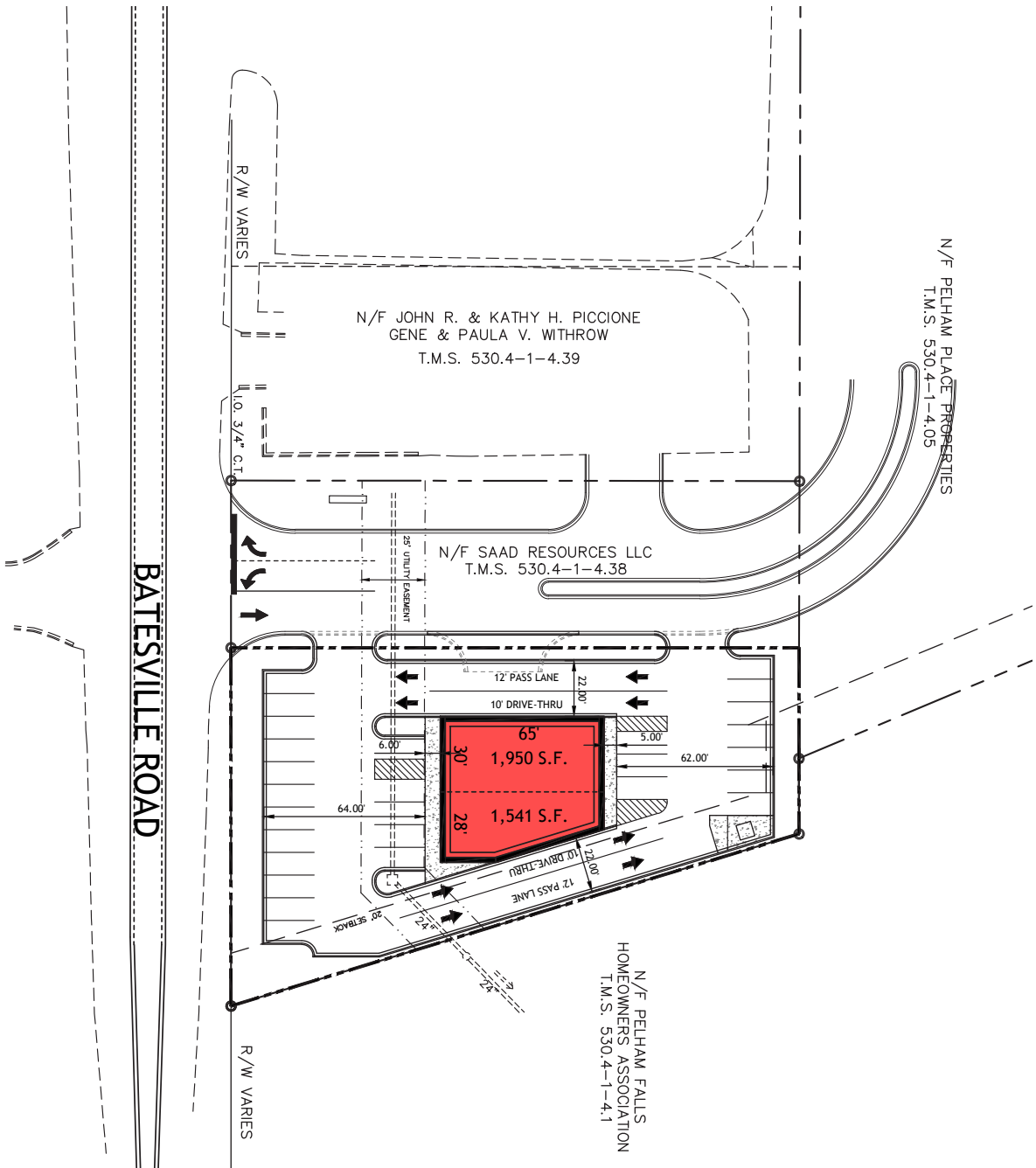
**Colliers International**  
55 E Camperdown Way | Suite 200  
Greenville, SC 29601

This document has been prepared by Colliers International for advertising and general information only. Colliers International makes no guarantees, representations or warranties of any kind, expressed or implied, regarding the information including, but not limited to, warranties of content, accuracy and reliability. Any interested party should undertake their own inquiries as to the accuracy of the information. Colliers International excludes unequivocally all inferred or implied terms, conditions and warranties arising out of this document and excludes all liability for loss and damages arising there from. This publication is the copyrighted property of Colliers International and/or its licensor(s). ©2020. All rights reserved.





SITE PLAN



**bluewater**  
civil design

718 Lowndesville Road • Greenville, SC 29607  
www.bluewatercivil.com • info@bluewatercivil.com  
SC Certificate of Authorization: C04212

**site data**

Jurisdiction: Greenville Co., SC  
tax map no.: 0530040100447  
zoning: PD - Planned Dev  
parcel area: ±0.56-acres  
building area: 2,998 s.f.  
parking: 27 spaces  
ratio: 9.0 sp/1,000sf

**scale: 1" = 40'**

40 20 0 40

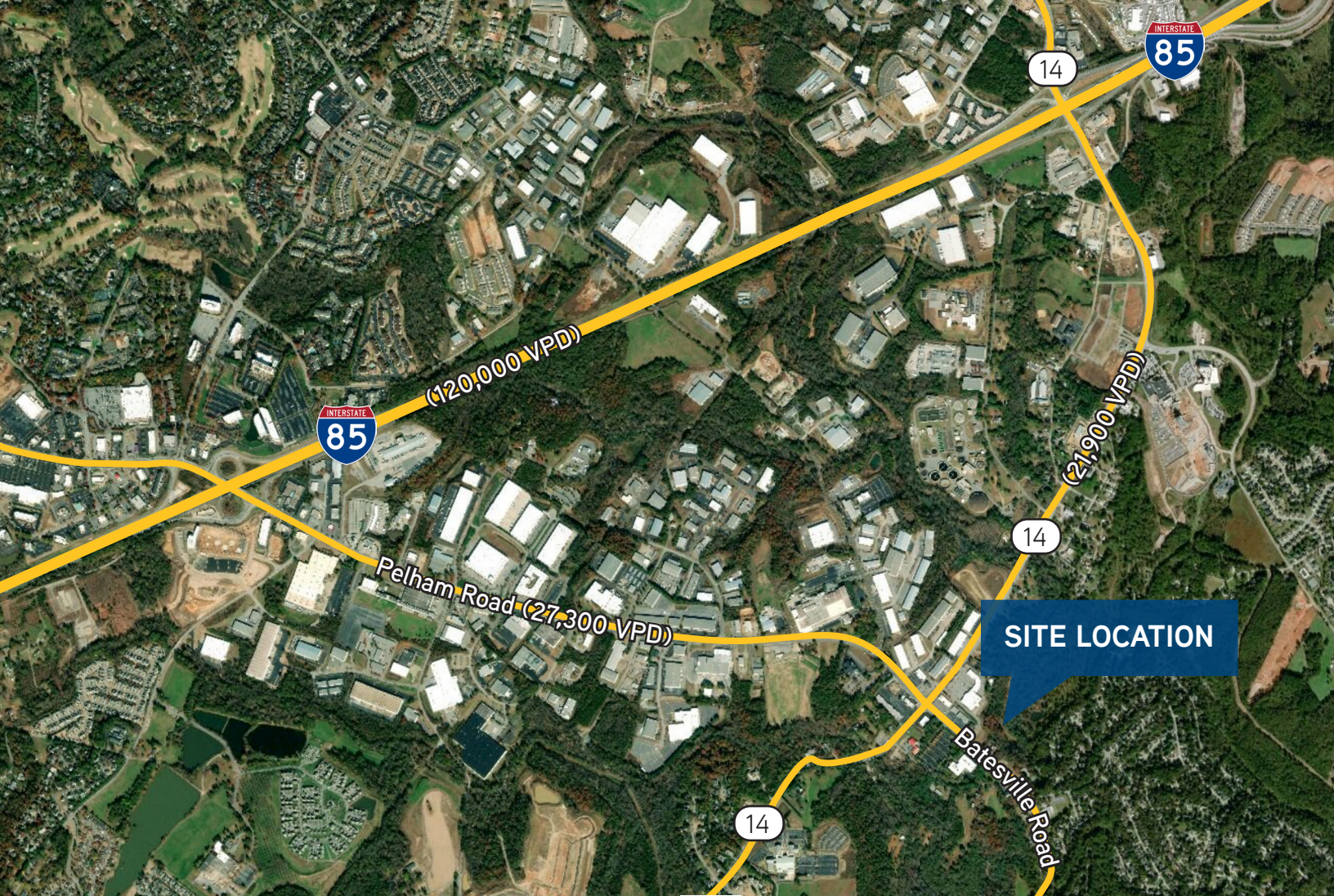
**STUDY PLAN**

**SP-1**





**Batesville Road**

**north**





## DEMOGRAPHICS

		5-MILES	10-MILES
Total # of Employees:		78,447	219,169
Median HH Income:		\$109,124	\$86,249
Population:		106,110	370,964
Households:		40,491	147,744

## NEARBY RESTAURANTS & RETAIL

CALIFORNIA DREAMING



Walgreens



**EARTH FARE**  
HEALTHY FOOD FOR EVERYONE

**FIVE GUYS**  
BURGERS and FRIES

Frank Hammond, CCIM CPM  
Shareholder  
+1 864 527 5451  
frank.hamond@colliers.com

Colliers International  
55 E Camperdown Way | Suite 200  
Greenville, SC 29601

